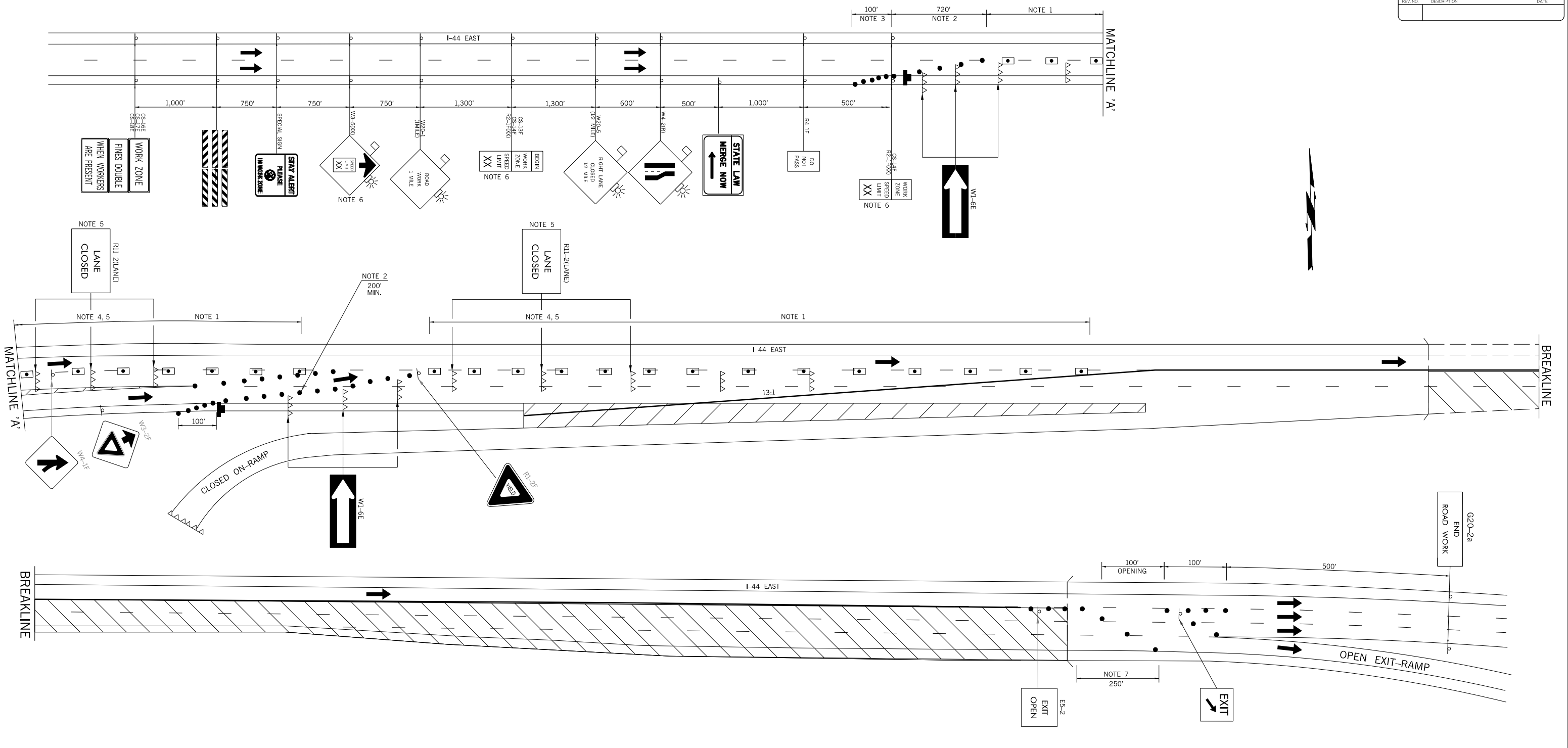


REVISIONS		
REV. NO.	DESCRIPTION	DATE



NOTE 1
 MAXIMUM SPACING BETWEEN CHANNELIZING DEVICES (FEET) SHALL BE EQUAL TO TWICE THE POSTED SPEED LIMIT (M.P.H.) WITH THE FOLLOWING EXCEPTIONS. SPACING SHALL NOT EXCEED 50 FEET FOR CONES OR TUBE CHANNELIZERS. SPACING SHALL NOT EXCEED 75 FEET FOR CHANNELIZER CONES. SPACING SHALL NOT EXCEED 100 FEET FOR TYPE III BARRICADES, VERTICAL PANELS OR DRUMS.

NOTE 2
 MAXIMUM SPACING BETWEEN CHANNELIZING DEVICES (FEET) SHALL BE EQUAL TO THE POSTED SPEED LIMIT (M.P.H.) WITH THE FOLLOWING EXCEPTIONS. SPACING SHALL NOT EXCEED 25 FEET FOR CONES OR TUBE CHANNELIZERS. SPACING SHALL NOT EXCEED 50 FEET FOR TYPE III BARRICADES, VERTICAL PANELS OR DRUMS.

NOTE 3
 A MINIMUM OF FIVE (5) CHANNELIZING DEVICES SHALL BE PLACED THROUGH THIS TAPER.

NOTE 4
 A LONGITUDINAL BUFFER AREA, TO ALLOW WORKERS TIME TO EVACUATE THE WORK AREA, SHOULD BE PROVIDED. FOR GUIDELINES ON SETTING THE LENGTH OF THIS BUFFER, SEE STANDARD DRAWING TCS2-1-(LATEST REVISION). ACTUAL LENGTH SHALL BE DETERMINED BY FIELD CONDITIONS AND THE JUDGEMENT OF THE ENGINEER.

NOTE 5
 TYPE III BARRICADES WITH SIGNS READING "LANE CLOSED" (R11-2) SHALL BE PLACED EVERY 2,000 FEET THROUGH ACTIVITY AREA. THESE TYPE III BARRICADES AND SIGNS MAY BE OMITTED ON MOVING OPERATIONS AND SHORT DURATION PROJECTS.

NOTE 6
 CONSTRUCTION SPEED LIMIT TO BE DETERMINED BY THE DIVISION ENGINEER.

NOTE 7
 DOWNSTREAM TAPERS SHALL CONTAIN A MINIMUM OF FOUR (4) CHANNELIZING DEVICES.
 FOR ADDITIONAL INFORMATION ABOUT TAPER LENGTHS AND SPACING OF CHANNELIZING DEVICES, SEE STANDARD DRAWING TCS2-1-(LATEST REVISION).

- KEY:**
- SIGN
 - DRUM
 - CHANNELIZER CONE
 - WORK AREA
 - ARROW DISPLAY
 - TYPE III BARRICADES
 - C. Z. IMPACT ATTENUATOR
 - PORT. LONG. BARRIER

DRAWING NOT TO SCALE

BRIDGES 'C' & 'D'

**TRAFFIC CONTROL DETAIL
 OUTSIDE LANE CLOSURES
 I-44 EASTBOUND**

Drawn	RGN	6/16
Design	RGN	6/16
Checked	SEB	6/16
TRAFFIC ENGINEERING JAMI L. SHORT		
STATE OF OKLAHOMA		DEPARTMENT OF TRANSPORTATION
DIVISION 8		JOB PIECE NO. 31944041
		SHEET NO. 7003

OUTSIDE BORDER IS ON A NON-PRINTING LEVEL

TULSA COUNTY